

MiniPOS Multi-User Configuration

MiniPOS is only to be used in a multi-user environment from version 3.1.0.0

Make sure MiniPOS is NOT running before following this guide.

Configuration

Data is located on this machine.

1. Click Start\Programs\Windows Explorer.
2. Navigate to Your C:\Program Files\MiniPOS System\BackOffice directory.
3. Right click on the BackOffice directory and click sharing from the popup menu.
4. Share directory as BACKOFFICE with FULL access rights.
5. Click Ok to close window.

Data is located on a remote machine or you are running Windows NT/2000.

1. Double click Network Neighbourhood and navigate to the machine which has BACKOFFICE shared.
2. Right click on BACKOFFICE and choose Map Network Drive from the popup menu.
3. Select drive M: and tick the reconnect at logon box.
4. Click Ok to close window.

Data is located on this machine and you are running Windows 95/98.

1. Click Start\Programs\Windows Explorer.
2. Navigate to your C:\ drive.
3. Right click on AUTOEXEC.BAT
4. Choose Edit from the popup menu.
5. if you have installed to the default path add the following line to the end of the file. If you have not installed to the default directory then the directory specified will need to be altered.

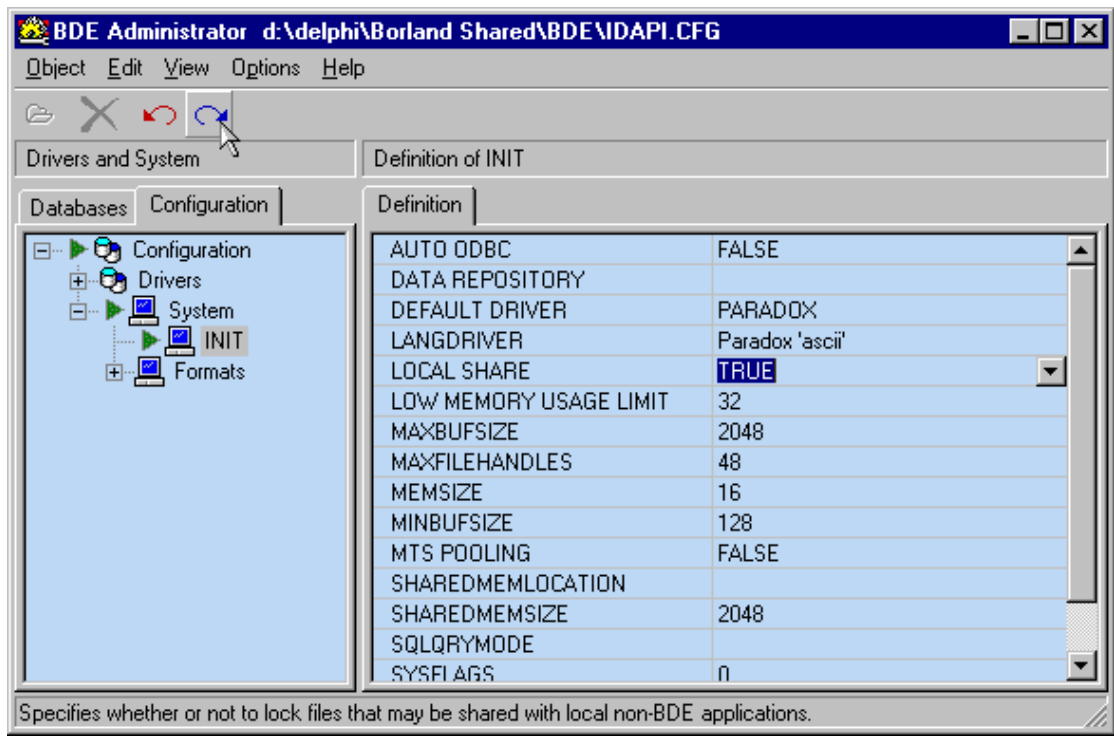
```
SUBST M: C:\PROGRA~1\MINIPO~1\BACKOFF~1
```

The `~` sign used above is shift #.

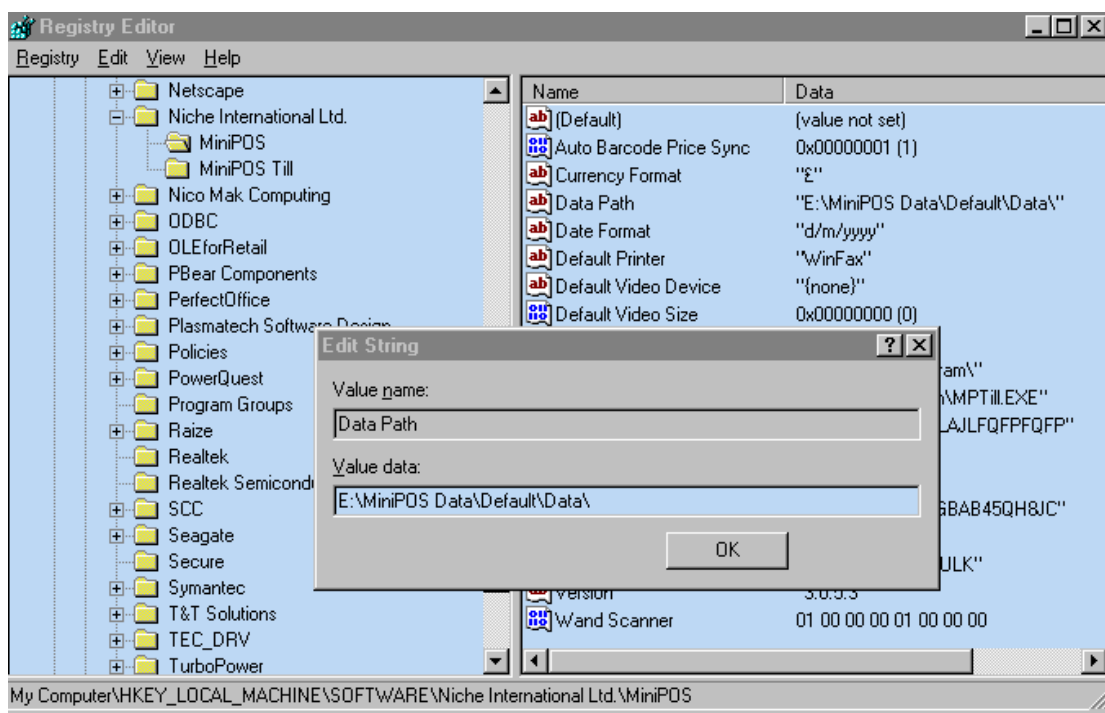
6. Click on the top left X button to close the window and choose Yes to save the changes.
7. Reboot your machine. If all was successful, under My Computer you should see a new drive called M: and when you enter that directory you should see a directory called DATA.

All Configurations

1. Click Start\Settings\Control Panel.
2. Double click, 'BDE Administrator'.
3. Click the configuration tab
4. Click the plus sign next to, 'System'.
5. Click on, 'INIT' and it should turn blue.
6. Click on, 'LOCAL SHARE' and the drop down button should appear.
7. Change, 'LOCAL SHARE' from, 'FALSE' to, 'TRUE'.
8. Click the blue right pointing arrow on the tool bar to save edits.
9. Click on the top left X button to close the window.



1. Click Start\Run, type REGEDIT and click ok.
2. Navigate to HKEY_LOCAL_MACHINE\Software\Niche International Ltd.\MiniPOS.
3. Double click DATA PATH and change the value to M:\DATA\ and click ok.
4. Click on the top left X button to close the window and save changes.



That's It.